

## PILOT BRIEFING ROVANIEMI X-MAS FLY-IN



## GENERAL

**ICAO:** EFRO

**IATA:** RVN

**Runways:** 03/21

## AIP SUPPLEMENT

**An AIP Supplement will be in effect on the day of the event. This supplement details vital procedures for the airport, study it carefully. You will be expected to know the information detailed in this supplement upon arriving the Rovaniemi TMA. The AIP Supplement is found on the last pages of this document.**

## LAYOUT

Rovaniemi has one runway and three aprons (one civil and two military). The military aprons are located to the north of the runway and the civil apron to the south.

The airport has one main taxiway, T, which runs along the full length of the runway.

The airport has limited parking stands available, thus when you reach the stand, disconnect to give way to new arrivals.

## DEPARTING TRAFFIC

If you will **not** be fully ready for departure when reaching the holding point, you **must** advise ATC!

Rovaniemi TWR will consider that 5 minutes from the time the aircraft starts taxiing is enough to in order to complete all cabin checks and achieve cabin readiness. TWR will advise if delay needs to be made.

## TAKEOFF CLEARANCE

When instructed to enter the runway, pilots are required to commence the maneuver without delay.

Pay special attention to your takeoff clearance as you might be advised of whom to contact after departure and when with the takeoff clearance!

## ARRIVING TRAFFIC

All flights arriving Rovaniemi shall be planned via the following TMA entry points:

- NEMGU
- NEPIX
- OSLIT
- RENVI
- ROTKO

The STAR chart of Rovaniemi offers no standard holding patterns at the TMA boundary. Because of this, standardized holding patterns that will be in effect on the day of the event has been established in the AIP Supplement!

If you arrive at the IAF, without having received prior instructions as what to do when reaching, maintain your present heading after passing the IAF!

On initial contact with approach (Rovaniemi Radar), state the following:

What to include	Example
<ul style="list-style-type: none"> <li>- Callsign</li> <li>- ATIS</li> </ul>	<p>FIN 1: "Rovaniemi Radar, <b>Finnair 1, information B</b>"</p>

While being transferred from Radar (FREQ 129.900 MHz) to Arrival (FREQ 118.600 MHz), the pilot shall restrict the initial call to **CALL SIGN only**, in order to avoid frequency congestion.

Make sure that you read the entire ATIS as it may contain important information with regards to your arrival to Rovaniemi.

## APPROACH & LANDING

During your approach Rovaniemi Radar will expect you to be able to plan your rate of descent as to reach the IAF at 2500ft, but **do not** descend without explicit prior permission by Rovaniemi Radar / Arrival.

In high density situations it is vital that you maintain the speed you are instructed! DO NOT slow down when you feel like it. ATC will slow you down in time. The speed on the ILS **must** be kept at 160KIAS until reaching 4dme final. Advise if unable due to weight or performance!

An instruction to "**land after**" might be issued by Rovaniemi Tower if assured that the arriving traffic will have vacated the runway before you cross the threshold, as per standard ICAO separation.

"FIN 1, preceding Boeing 738 is vacating the runway, surface wind --- degrees/--- knots, runway 21 cleared to land"

## AIP SUPPLEMENT

**Study this AIP Supplement carefully!**

<b>AIP SUPPLEMENT – SUOMI / FINLAND</b> Aeronautical Information Service  <a href="http://xn.ivao.aero">xn.ivao.aero</a>	AIP SUP NR <b>201 / 2018</b>
FOR FLIGHT SIMULATOR USE ONLY	<b>WEF</b> <b>15 DEC 2018</b>

### **CHRISTMAS FLY-IN TO ROVANIEMI EFRO**

Publication date 22 NOV 2018

#### **1. Validity**

15 DEC 2018, 1600-2359 UTC

#### **2. Restrictions for VFR traffic**

No VFR traffic will be accepted within the lateral limits of EFRO TMA and EFRO CTR, ref. AIP ENR 2.1 and AIP EFRO AD 2.17.

*Note: Reindeer are exempted from the above*

### 3. Holding procedures and ATFM

Airborne holdings for IFR traffic arriving to EFRO are established as follows.

Holding fix	Inbound track	Turn direction	Outbound leg time	Vertical limits
ROTKO	157 DEG MAG	LEFT	2 minutes	FL200 - FL100
OSLIT	106 DEG MAG	RIGHT	2 minutes	FL200 - FL100
NEMGU	054 DEG MAG	LEFT	1.5 minutes	FL280 - FL100
NEPIX	006 DEG MAG	LEFT	2 minutes	FL280 - FL100
REIVI	016 DEG MAG	RIGHT	1 minute	FL240 - FL100

Refer to Appendix 1

*Note: An expected approach time will be transmitted to aircraft that will be subject to a delay of 10 minutes or more in accordance with ICAO Doc 4444, 6.5.7*

Flow restrictions will not be applied for arriving aircraft. The aerodrome capacity is 20 arrivals per hour. In case the number of arrivals exceeds the capacity, airborne holdings will be used to delay excess traffic.

A maximum of approximately 12 departures per hour will be accepted. Due to limited apron capacity, departing aircraft subject to delay will not be allowed to absorb delay by waiting at the departure gate. Aircraft waiting in line for departure on taxiway T north of taxiway C will be allowed to shut down one or more engines while waiting, but must at all times be ready to depart with 3 minutes notice.

#### 4. Use of Rovaniemi as alternate aerodrome

EFRO will not be available as flight plan alternate aerodrome for the duration.

#### 5. Route closures

The following ATS route segments will be closed during the validity of this SUP.

*Note: The mentioned routes are available for traffic to and from EFRO*

Route designator	Segment	Vertical limits
T95	RUBSI - EVIMI	FL285 - FL95
M6	TUGPU - ASLUP	FL285 - FL95
T40	XONTU - ROTKO	FL285 - FL95
M857	UPEDU - AMUBA	FL245 - FL95
M607	MISMO - ULROM	FL285 - FL95
Y86	REIVI - ULROM	FL285 - FL95

#### 6. Unavailability of runway 03

Runway 03 will be unavailable for take-off and landing, unless the tailwind component on runway 21 exceeds 15 knots.

#### 7. Taxi procedures

Arriving aircraft shall, after landing on runway 21, vacate the runway in accordance with the below:

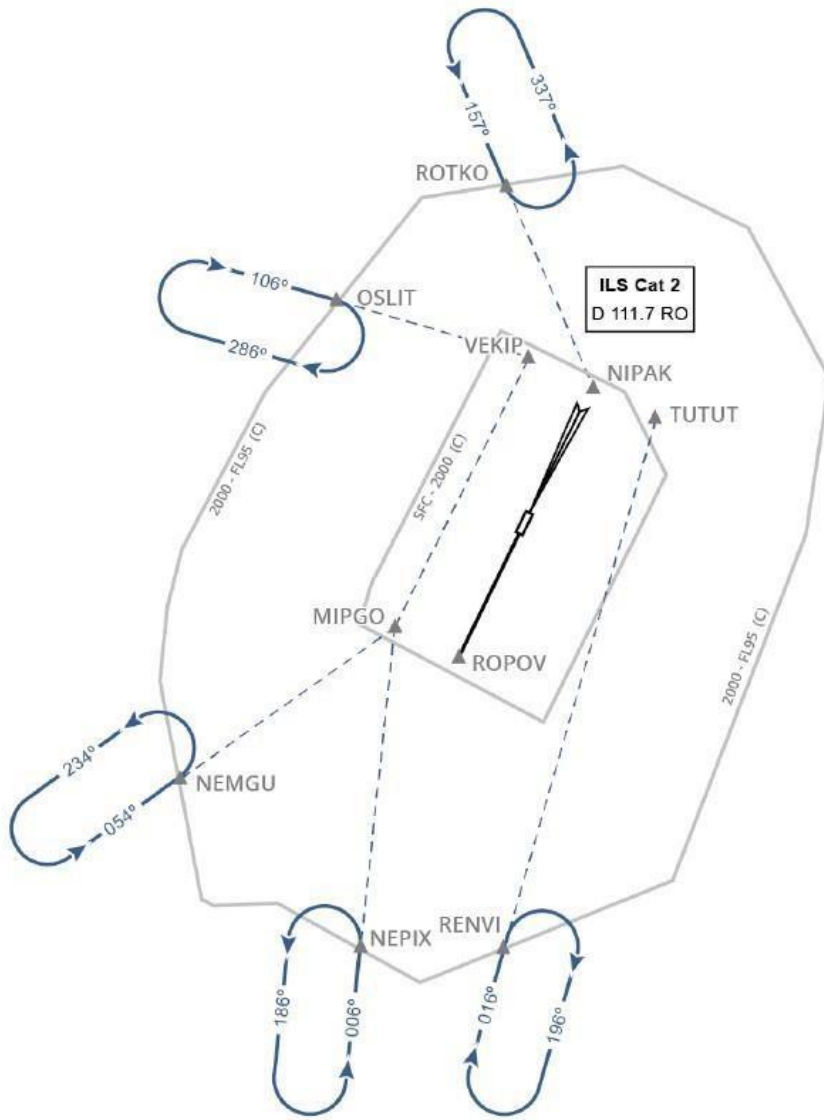
ICAO approach category	Route
A	Taxiway C, hold short of T
B-C	Taxiway H or B, hold short of T
D-E	Taxiway B, hold short of T or Taxiway A, join taxiway T, hold short of P
R (Reindeer)	Taxiway N or L, hold short of K1

Refer to Appendix 2

#### 8. Rovaniemi Ground movement

Taxi instructions for aircraft on the manoeuvring area and apron south will be provided by Rovaniemi Tower, 118.700.

Arriving aircraft shall expedite vacating the runway and continue taxi to assigned stand.



D-ATIS	EFRO_APP
SWEDEN ACC	132.150
TAMPERE ACC	136.650
TAMPERE ACC	124.2
TAMPERE ACC	126.1
ROVANIEMI RAD	129.9
ROVANIEMI ARR	118.6
ROVANIEMI TWR	118.7
ROVANIEMI DLV	118.525

**WARNING**  
 ALWAYS IDENTIFY ILS  
 BEFORE USE  
 DEFAULT MSFS FREQ  
**109.1**

